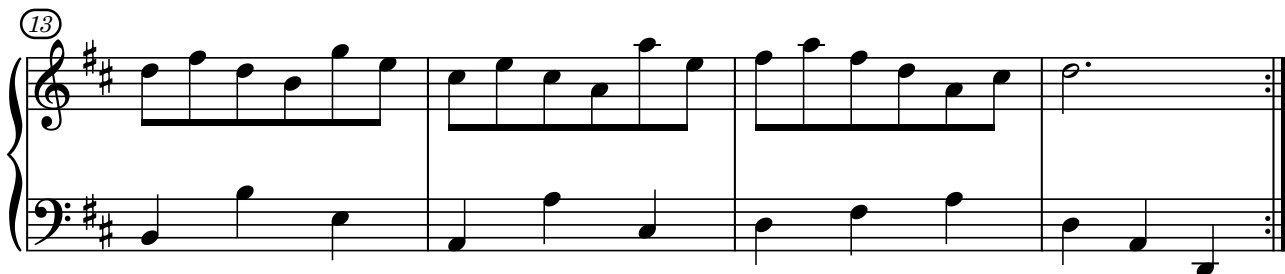
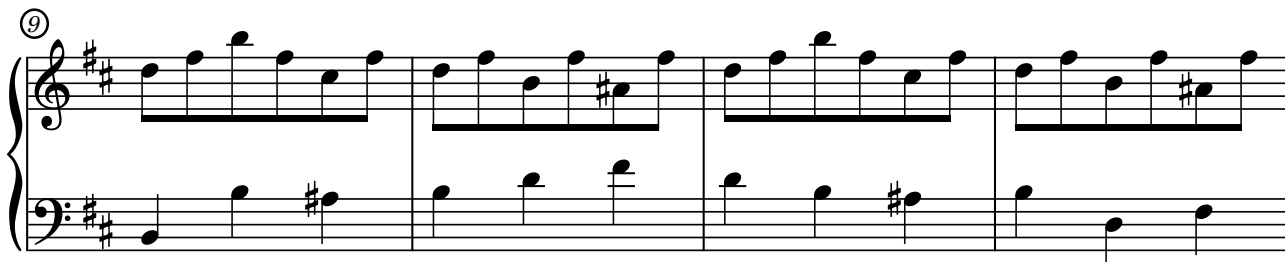
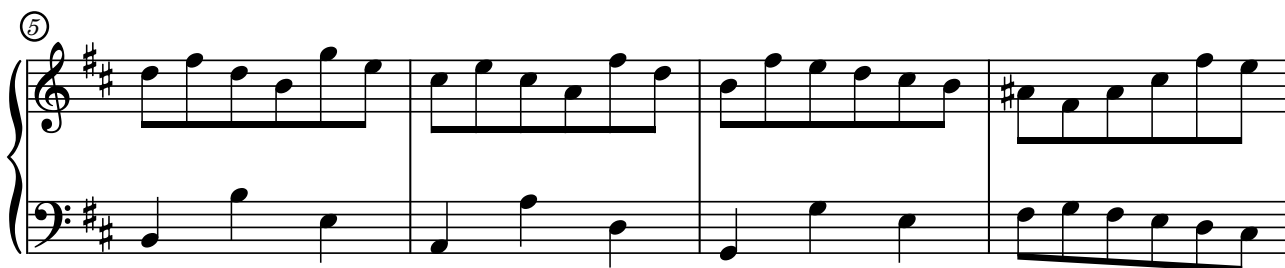
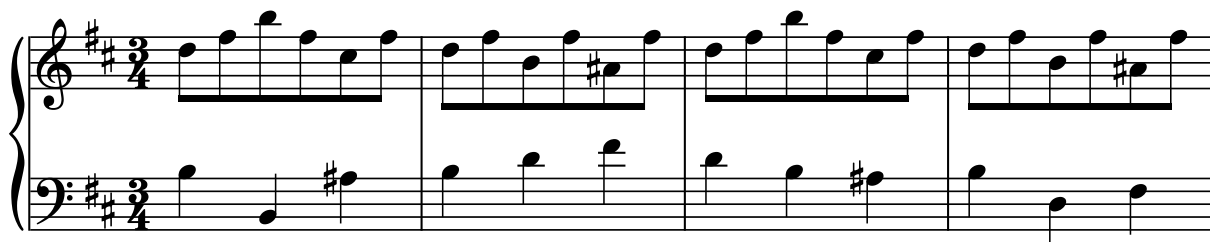


Minuetto in Bm

Dalla Suite francese n.3 BWV 814



J.S.Bach



(17)

Measures 17-20. Treble clef: Measure 17 has a descending eighth-note line (F#4, E4, D4, C#4, B3, A3). Measures 18-20 continue with eighth-note patterns. Bass clef: Steady eighth-note accompaniment (F#2, A2, B2, D3).

(21)

Measures 21-24. Treble clef: Measure 21 has a half-note melody (F#4, E4, D4, C#4). Measures 22-24 continue with eighth-note patterns. Bass clef: Steady eighth-note accompaniment (F#2, A2, B2, D3).

(25)

Measures 25-28. Treble clef: Measure 25 has a half-note melody (F#4, E4, D4, C#4) with a triplet. Measures 26-28 continue with eighth-note patterns. Bass clef: Steady eighth-note accompaniment (F#2, A2, B2, D3).

(29)

Measures 29-32. Treble clef: Steady eighth-note melody (F#4, E4, D4, C#4, B3, A3). Bass clef: Steady eighth-note accompaniment (F#2, A2, B2, D3).

(33)

Measures 33-36. Treble clef: Steady eighth-note melody (F#4, E4, D4, C#4, B3, A3). Bass clef: Steady eighth-note accompaniment (F#2, A2, B2, D3).